



Permeable Ground Reinforcement

## **Product Overview**

X30 | Bloxx | E40 | E50

# ECORASTER® E40 | E50

Quality permeable ground reinforcement



High quality permeable ground reinforcement.  
E40 Allround and E50 Heavy-Duty.

20 YEAR  
warranty

ECORASTER®

## Your Benefits:

- ✓ easy and quick installation (up to 100 m<sup>2</sup> | 1,076 ft<sup>2</sup>/h per person)
- ✓ high resilience (up to 800 t/m<sup>2</sup>)
- ✓ low maintenance
- ✓ installation without heavy construction equipment
- ✓ no edging needed
- ✓ permeable ground reinforcement
- ✓ low transport and handling costs
- ✓ versatile applicable, accessories available
- ✓ weatherproof and unbreakable
- ✓ Safety interlocking, 36 notches per m<sup>2</sup>
- ✓ UV-resistant and frostproof
- ✓ immediately green area (ECORASTER® Green, pre-greened)
- ✓ 20 year warranty
- ✓ „Made in Germany“ (TÜV Nord)



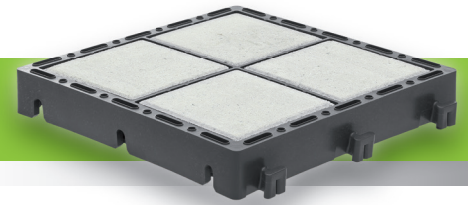
## Easy to install:



Type:	Dimensions:	Material:	Wall thickness:	Load:	Solubility:	Compressive strength:	Weight per piece:	Weight per m <sup>2</sup>   10.76 ft <sup>2</sup> :
<b>E50</b> Heavy Duty	330 x 330 x 50 mm • 12.99 x 12.99 x 1.97 "	100% recycled Polyethylene (LDPE)	5 mm • 0.1968 "	up to 800 t/m <sup>2</sup>	resistant to acids, al- kalis, alcohol, oil and petrol (de-icing salt, ammonia, acid rain, etc.)	up to 20t point axle load (DIN 1072)	1,06 kg • 2.34 lbs	9,55 kg • 21.05 lbs
<b>E40</b> Allround	330 x 330 x 40 mm • 12.99 x 12.99 x 1.57 "		3,6 mm • 0.14 "	(depend- ing on fill type)			0,58 kg • 1.27 lbs	5,22 kg • 11.50 lbs

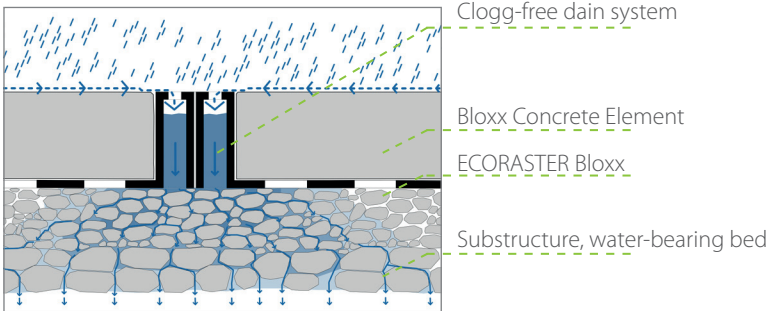
# ECORASTER® Bloxx

With integrated „no-clogging“ drainage



Get paved areas with less efforts - permeable!  
Safe money, time and maintenance.

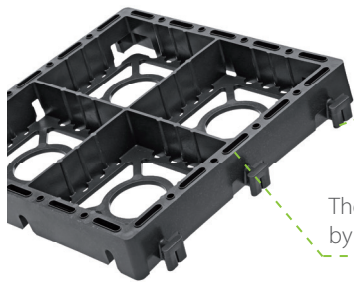
## How it works:



Unique safety interlocking,  
NO bumps, NO trip hazards!



## Fully accessible!!!



Be Creative! ECORASTER® Bloxx fits into the ECORASTER® system.

Thermal expansion is compensated by the expansion elements

Colorful: Dark grey, light grey, red, white... combine as u like.



## Clogging? Not possible!

## Easy to install:



ECORASTER® Bloxx, unpack, snap together, and drop the blocks in. No need to tuckpoint the joints!

Bloxx elements connect together in seconds!

Bloxx Paver Elements, replaceable without loosening the cluster (e.g. exchange dirty paver)



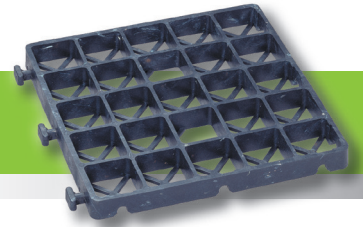
- ✓ Safety Locking System
- ✓ High infiltration rate
- ✓ Quick Installation
- ✓ Low maintenance

Type:	Dimensions:	Material:	Paver colors:	Solubility:	Compressive strength:	Weight per m <sup>2</sup> :
<b>Bloxx</b>	330 x 330 x 50 mm • 12.99 x 12.99 x 1.97"	100% recycled Polyethylene (LDPE)	red, white, dark grey and light grey	resistant to acids, alkalis, alcohol, oil and petrol (de-icing salt, ammonia, acid rain, etc.)	up to 20t point axle load (DIN 1072)	approx. 85 kg • 187.39 lbs (incl. pavers)



# ECORASTER® X30

## Hardscape Base Stabilizing System

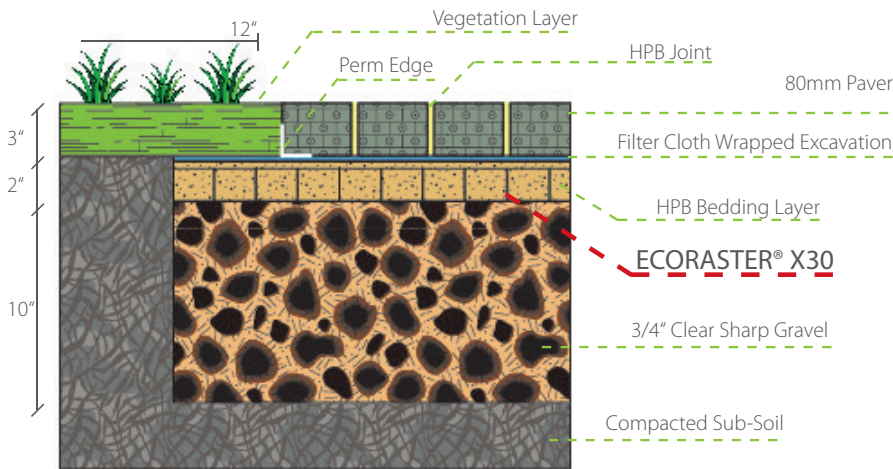


A heavy duty linking grid system that allows you to build stronger hardscapes by stabilizing the base material.

### Your Benefits:

- » Up to 50% base reduction in excavation
- » Up to 30% labour cost savings
- » Wider pin-point load dispersal
- » Reduced warrantee call-backs from shifting and sinking
- » Reduced risk of poor sub-base compaction
- » Sustainable, efficient, and profitable!

### Easy to install:



### Applications:

- » Heavy Duty Base Stabilization
- » Permeable Base Stabilization
- » Interlock Driveway Base Support
- » Permeable Interlock Concrete Paving Installation

Questions? Give us a call:




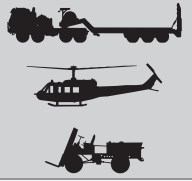


+49 9233 77 55 0

Type:	Dimensions:	Material:	Wall thickness:	Load up to:	Solubility:	Compressive strength:	Weight per piece:	Weight per m <sup>2</sup>   10.76 ft <sup>2</sup> :
<b>X30</b> Base Stabilizer	330 x 330 x 30 mm • 12.99 x 12.99 x 1.18"	100% recycled Polyethylene (LDPE)	0.2 in	23 t/ft <sup>2</sup> (unfilled) 75 t/ft <sup>2</sup> (filled)	resistant to acids, alkalis, alcohol, oil and petrol (de-icing salt, ammonia, acid rain, etc.)	up to 20t point axle load (DIN 1072)	0,77 kg • 1.7 lbs	6,93 kg • 15.3 lbs

# Specifications

Sustainable and cost-saving

ECORASTER® Application		GREEN / MICROGREEN	MINERAL	Bloxx
		vegetated	gravel filled	paved
Load	 Roads and paths used only for pedestrians and bicycles may use this	E40 alternative: S50	E40 alternative: S50	✓
	 Paths, walkways and similar applications, as well as car parking	E40 alternative: E50 or S50	E40 alternative: E50	✓
	 Roads, road shoulders and parking lots used for all types of vehicles	E50	E50* alternative: ECORASTER® STONE	✓
	 Areas used with high point axle loading e.g. warehousing (forklifts and trucks), truck parking lots, bus parking, helicopter landing pads.	---	E50* alternative: ECORASTER® STONE	✓

Installed and unfilled, the ECORASTER® system can be driven on with heavy wheeled vehicles (EN 124 / D400 | except Bloxx).



\*with 1-2cm | 3/8" - 3/4" covering-over

## Certificates and Approvals

- ✓ UV-resistant, certified DIN EN 60068-2-5
- ✓ Point axle loading up to 20 t/m<sup>2</sup>, DIN 1072:1985
- ✓ Heavy-duty, tried and tested DIN EN 124:2011
- ✓ Environmentally safe, tested OECD 202:2004
- ✓ Factory warranty: 20 years from purchase date (private use)
- ✓ NATO certified E50 - MOD / 9330-99-858-1406
- ✓ TÜV CERT
- ✓ TÜV Nord „Made in Germany“



## Accessories

PURUS offer accessories for ECORASTER® ground reinforcement systems, including hinge and curve adaptors as well as parking markers.

### Please note:

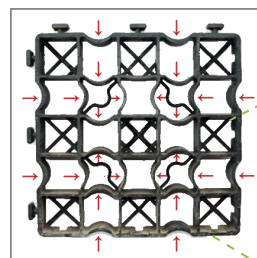
Please read the manual/  
check our website for more information!  
1m<sup>2</sup> = 10.764 ft<sup>2</sup>

## Safety interlocking system



Effective safety snap connections are quick and easy to install.

## Deploy without expansion joints



Not affected by temperature variations due to the integral expansion elements.

Installed and unfilled, the ECORASTER® system can be driven on with heavy wheeled vehicles (class D 400, excl. Bloxx)

# Developing sustainable solutions for a permeable ground reinforcement.



German engineering – installed worldwide.  
Questions? Please give us a call:

